



Comune di Deruta
Provincia di Perugia



Next Generation EU
EuroPA Comune

Legenda



tubo in PVC pesante SN4 Ø 315



pozzetto di captazione in CA prefabbricato dim. cm. 40x40
con griglia in ghisa sferoidale carrabile D400



pozzetto di raccordo in CA prefabbricato dimensioni
interne cm. 60x60 con coperchio.

GEOM. PUCCIARINI MARCO

Strada del Boccio, 2/o - 06134 Perugia (PG)
Piazza Don Giovanni Penna, 12 - 06089 Torgiano (PG)
cod. fisc. PCC MRC 66505 L216G - part. IVA 02121670547
tel. 075 5913049 cell. 347 1672798 e-mail: marco.pucciardini@geometri.pg.it

COMMITTENTE: COMUNE DI DERUTA (PG).

OGGETTO: Lavori di abbattimento barriere architettoniche di un tratto di
Via Bernardino di Betto in località Fanciullata.

Oggetto dell'elaborato: Planimetria area di intervento - FOGNATURA -

NR. TAVOLA

IL PROGETTISTA

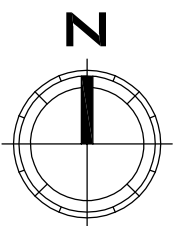
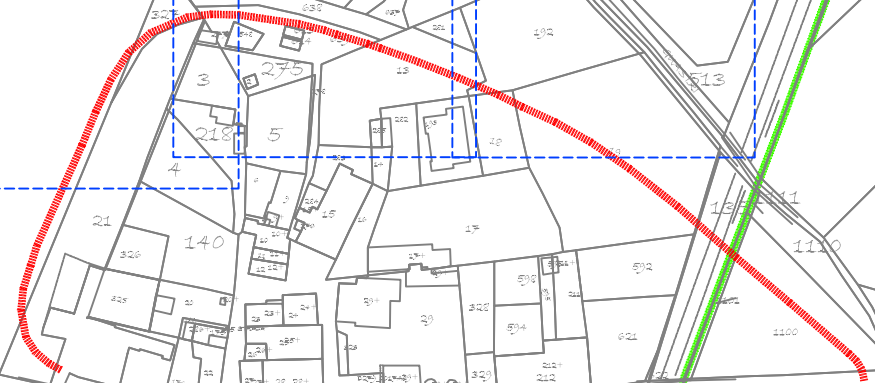
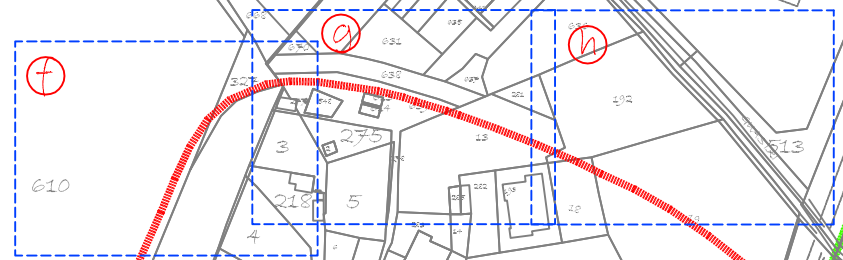
4

Scala 1:200

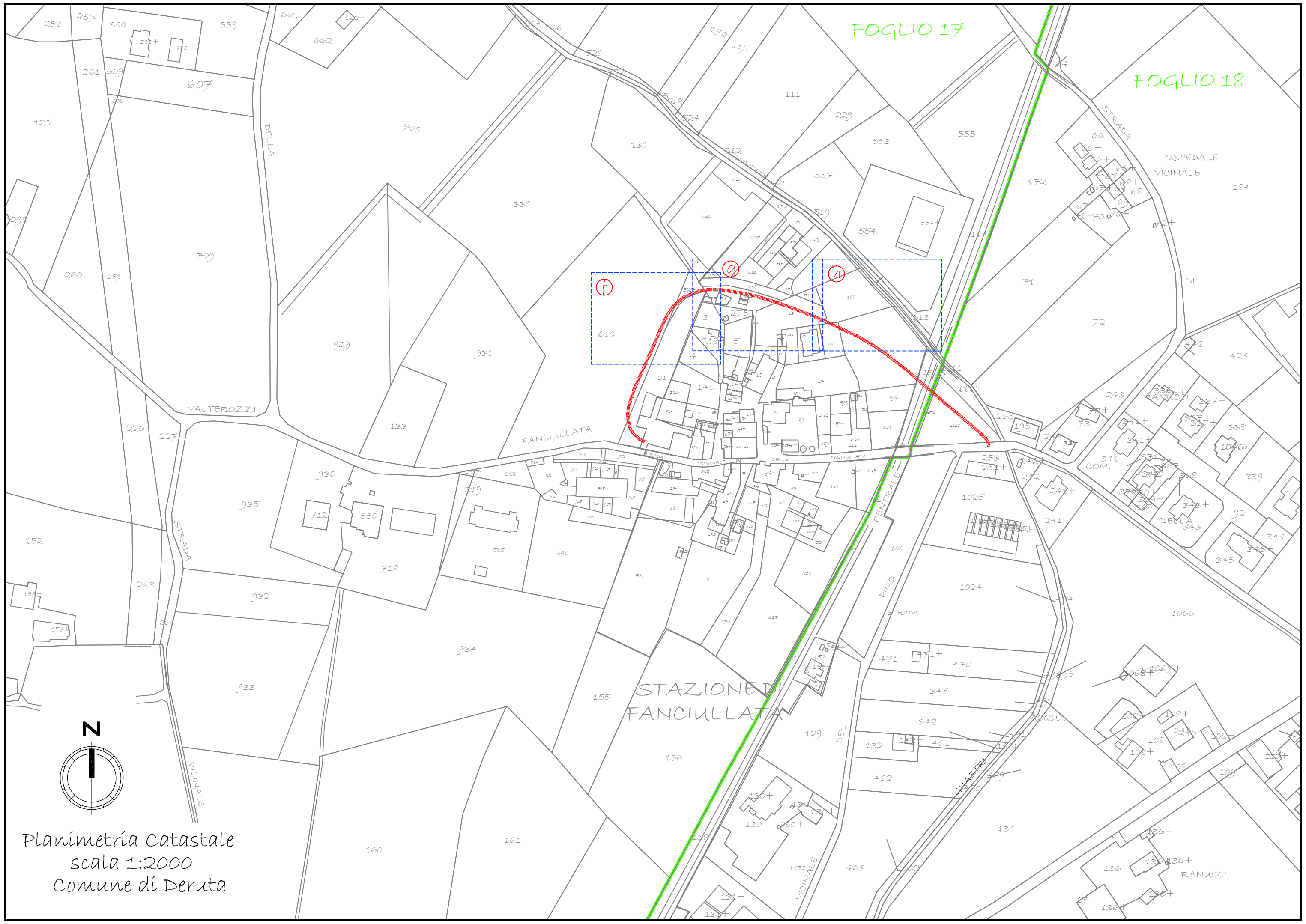
Data: maggio 2022

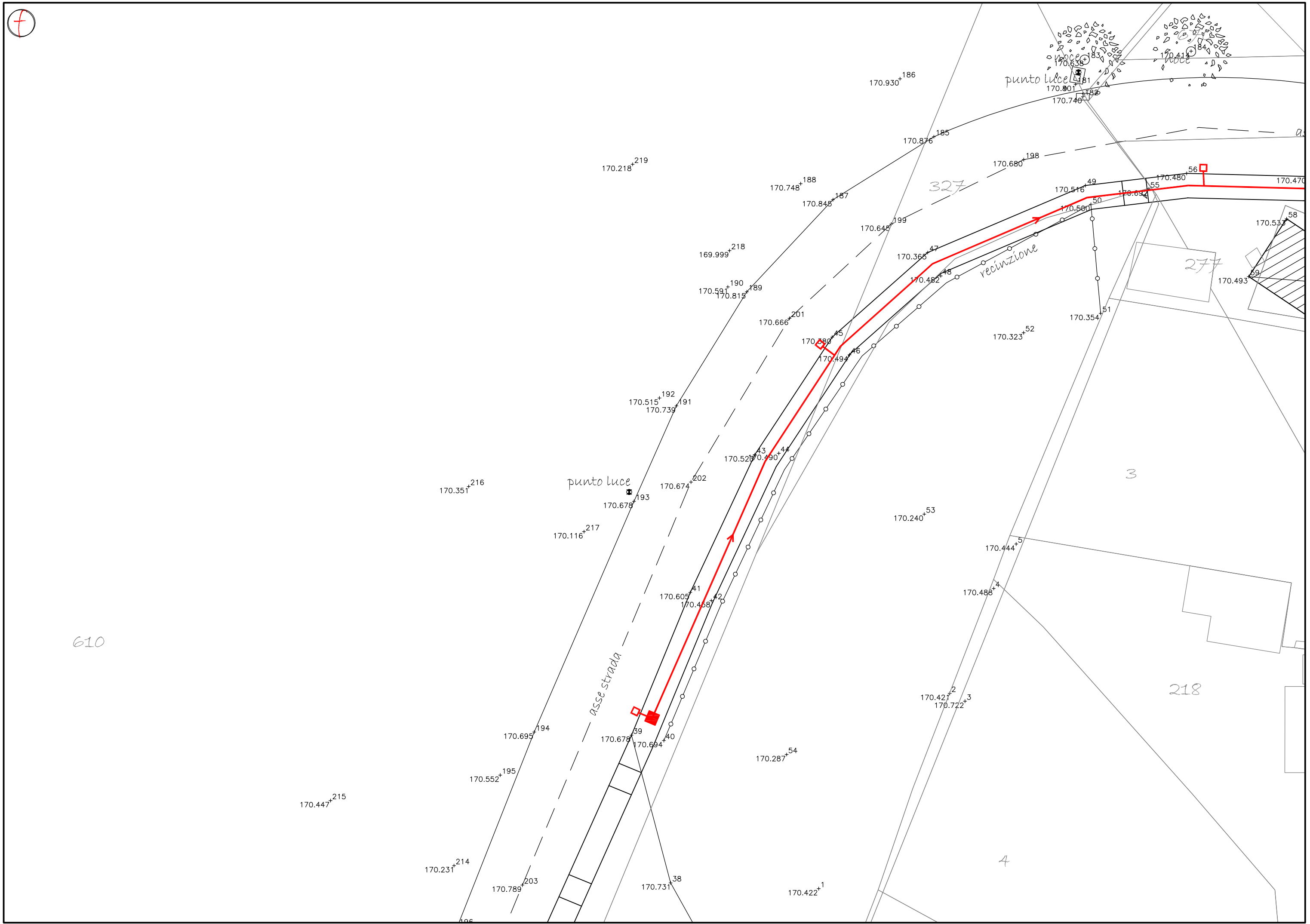
FOGLIO 17

FOGLIO 18



Planimetria catastale
scala 1:2000
Comune di Deruta





610

punto luce

punto luce

asse strada

recinzione

327

277

3

218

4

56

58

59

170.287⁺⁵⁴

170.240⁺⁵³

170.422⁺¹

170.422⁺²

170.722⁺³

170.488⁺⁴

170.444⁺⁵

170.515⁺¹⁹²

170.739⁺¹⁹¹

170.116⁺²¹⁷

170.351⁺²¹⁶

170.447⁺²¹⁵

170.231⁺²¹⁴

170.552⁺¹⁹⁵

170.695⁺¹⁹⁴

170.789⁺²⁰³

170.731⁺³⁸

170.678⁺³⁹

170.694⁺⁴⁰

170.605⁺⁴¹

170.458⁺⁴²

170.521⁺⁴³

170.990⁺⁴⁴

170.494⁺⁴⁶

170.580⁺⁴⁵

170.666⁺²⁰¹

170.591⁺¹⁸⁹

170.815⁺¹⁹⁰

169.999⁺²¹⁸

170.748⁺¹⁸⁸

170.845⁺¹⁸⁷

170.645⁺¹⁹⁹

170.365⁺⁴⁷

170.482⁺⁴⁸

170.930⁺¹⁸⁶

170.876⁺¹⁸⁵

170.680⁺¹⁹⁸

170.516⁺⁴⁹

170.501⁺⁵⁰

170.694⁺⁵⁵

170.480⁺⁵⁶

170.470

170.537

170.354⁺⁵¹

170.323⁺⁵²

170.493

170.638

170.801

170.746

170.414

170.414

9

668

635

170.030⁺

170.092⁺

170.182⁺¹⁸⁰

631

noce
170.636⁺
170.801⁺
170.746⁺

noce
170.414⁺
170.418⁺

178
170.553⁺

179
170.523⁺

177
170.610⁺

174
170.585⁺

175
170.546⁺

176
170.493⁺

166
170.922⁺
170.860⁺

165
170.970⁺

asse strada

198

49
170.516⁺
50
170.500⁺

55
170.480⁺

56
170.470⁺

57
170.470⁺

63
170.374⁺

176
170.493⁺

168
170.578⁺

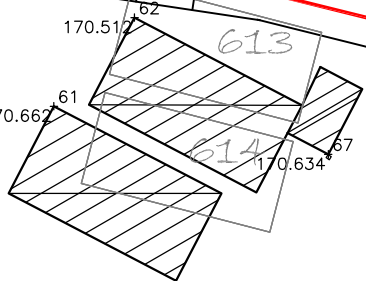
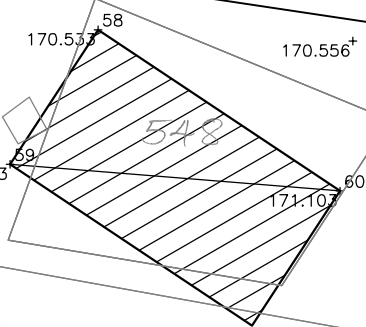
173
170.484⁺

171
170.482⁺

164
170.557⁺

163
170.298⁺

277



punt
noce
639

281

ne

51
170.354⁺

52

59
170.493⁺

60
171.107⁺

61
170.667⁺

62
170.512⁺

64
170.384⁺

65
170.359⁺

68
170.369⁺

69
170.516⁺

71
170.377⁺

72
170.419⁺

169.98⁺

170
170.482⁺

170
170.482⁺

73
170.389⁺

74
170.363⁺

169.98⁺

13

169.93⁺

275

3



278

170.

75
170.386⁺

76
170.278⁺

77
169.752⁺

78
170.109⁺

218

5

285

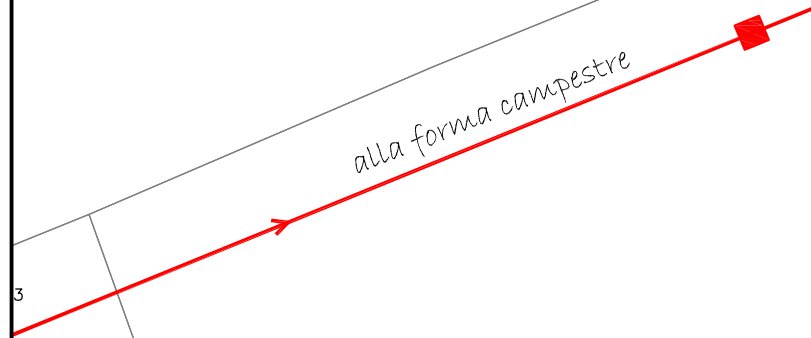
282

193

h

636

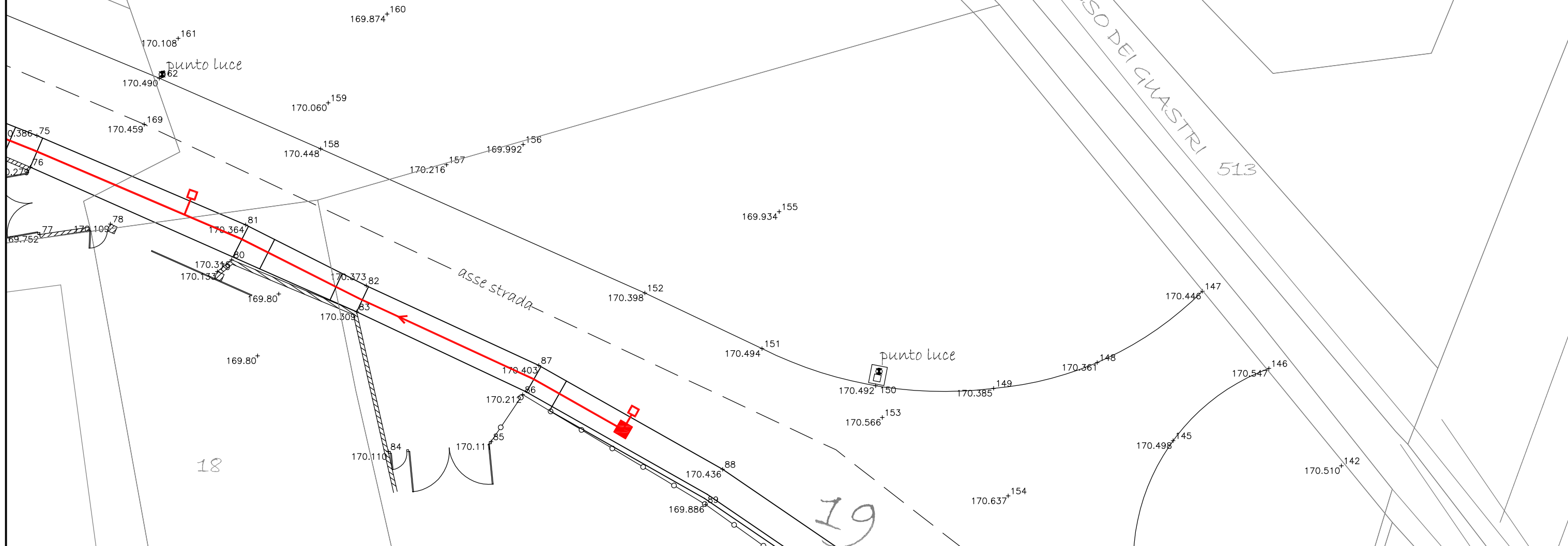
alla forma campestre



81

192

FOSSO DEI QUASTRI 513



punto luce

62

169.874¹⁶⁰

170.108¹⁶¹

170.060¹⁵⁹

170.459¹⁶⁹

170.448¹⁵⁸

170.216¹⁵⁷

169.992¹⁵⁶

169.934¹⁵⁵

170.364⁸¹

170.316⁸⁰

170.373⁸²

169.80⁸³

170.398¹⁵²

170.494¹⁵¹

170.446¹⁴⁷

18

169.80⁸⁴

170.110⁸⁴

170.111⁸⁵

170.212⁸⁶

170.403⁸⁷

170.436⁸⁸

169.886⁸⁹

punto luce

170.492¹⁵⁰

170.566¹⁵³

170.637¹⁵⁴

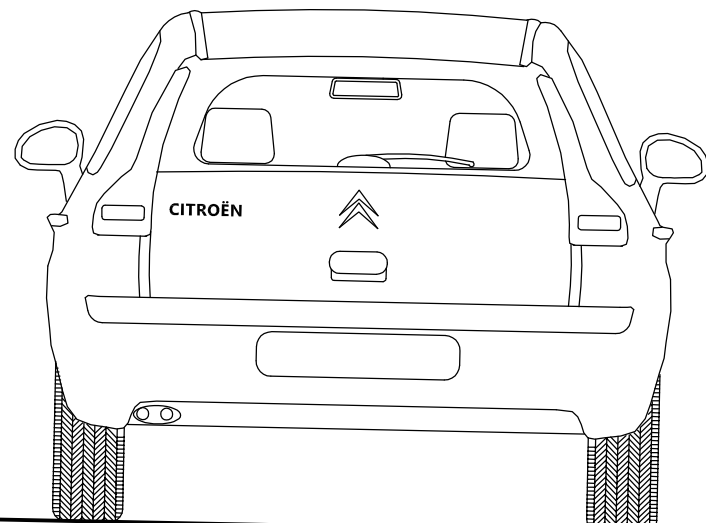
170.498¹⁴⁵

170.547¹⁴⁶

170.510¹⁴²

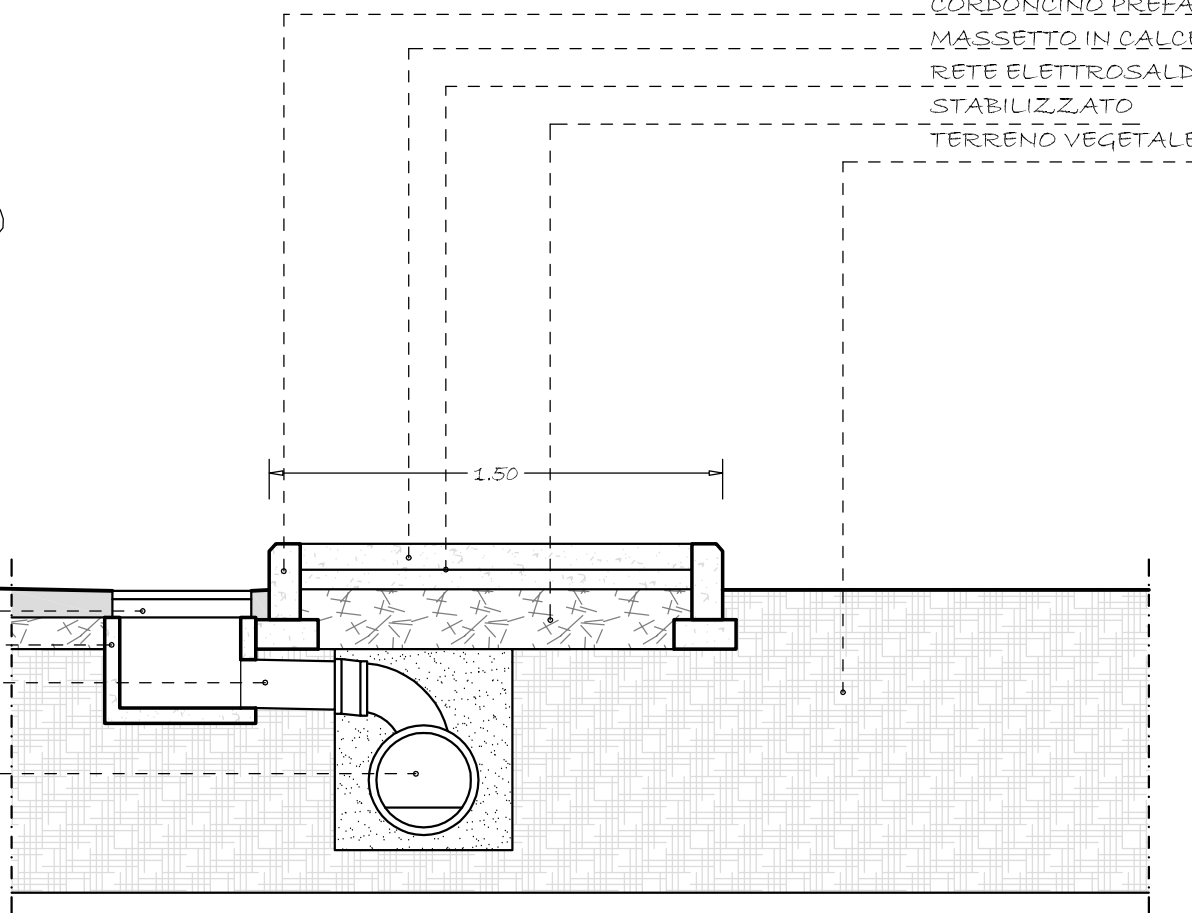
19

Sezioni Tipo
scala 1:25

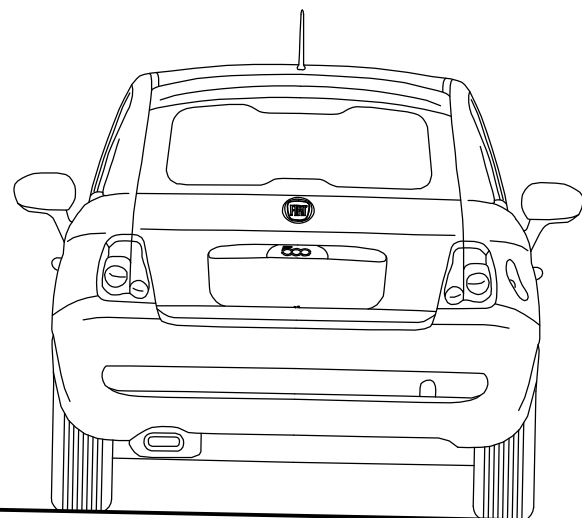


GRIGLIA IN GHISA SFEROIDALE 40x40 D400
POZZETTO 40x40
TUBO DI RACCORDO Ø 160

TUBO IN PVC PESANTE SN4 Ø 315



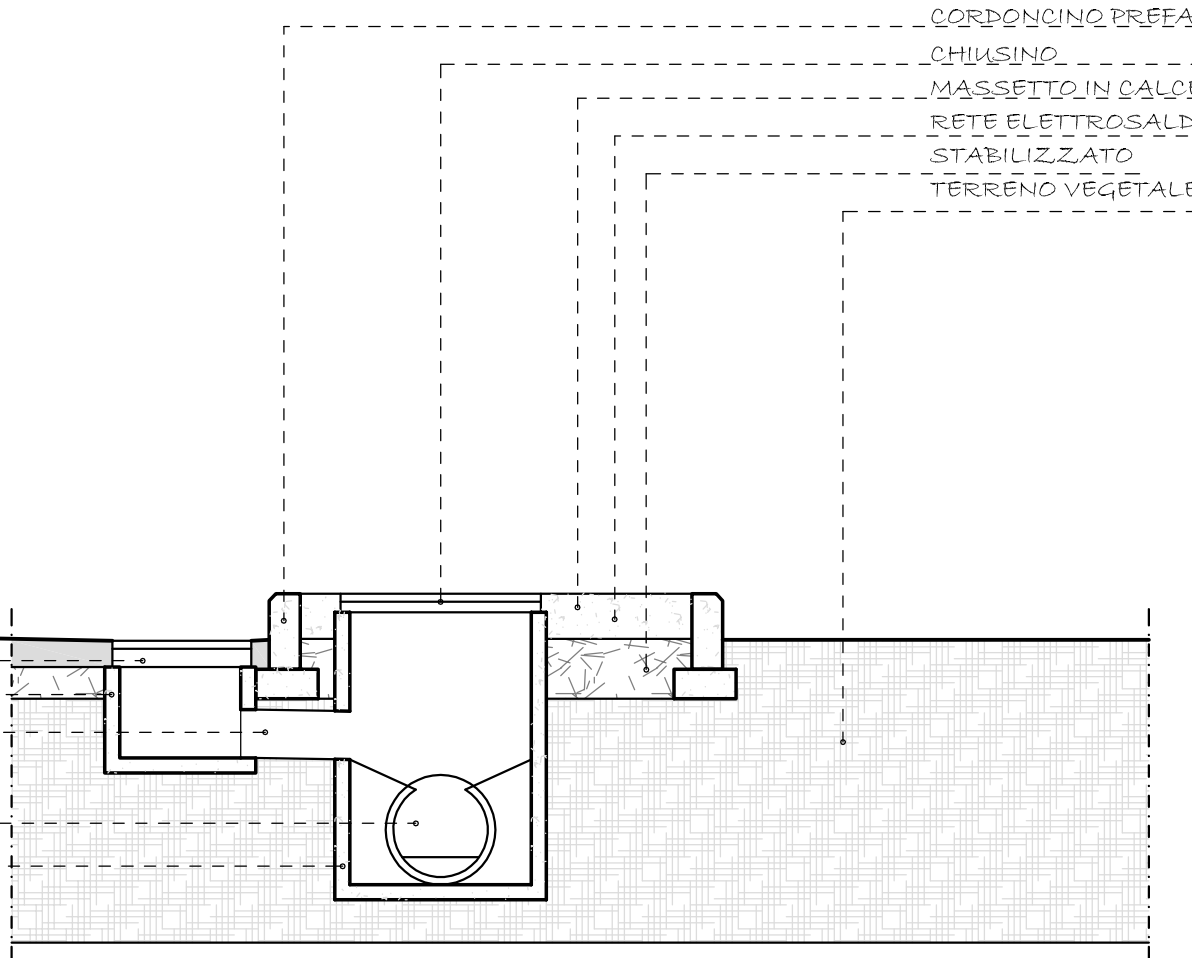
CORDONCINO PREFABBRICATO IN CEMENTO VIBRATO
MASSETTO IN CALCESTRUZZO
RETE ELETTRORALDATA Ø 6 MAGLIA 15x15
STABILIZZATO
TERRENO VEGETALE



GRIGLIA IN GHISA SFEROIDALE 40x40 D400
POZZETTO 40x40
TUBO DI RACCORDO Ø 160

TUBO IN PVC PESANTE SN4 Ø 315

POZZETTO 70x70 ESTERNO



CORDONCINO PREFABBRICATO IN CEMENTO VIBRATO
CHIUSINO
MASSETTO IN CALCESTRUZZO
RETE ELETTRORALDATA Ø 6 MAGLIA 15x15
STABILIZZATO
TERRENO VEGETALE