

Geom. PUCCIARINI MARCO

Strada del Boccio, 2/o - 06134 Perugia (PG)
Piazza Don Giovanni Penna, 12 - 06089 Torgiano (PG)
cod. fisc. PCC MRC 66S05 L216G - part. IVA 02121670547
tel. 075 5913049 cell. 347 1672798 e-mail: marco.pucciarini@geometri.pg.it

COMMITTENTE: Comune di DERUTA.

OGGETTO: Interventi di adeguamento e di adattamento funzionale degli spazi e delle aule didattiche, in conseguenza dell'emergenza sanitaria da Covid-19, della scuola primaria di Deruta ubicata in via Padre Ugolino Nicolini.

Oggetto dell'elaborato: Planimetrie stato attuale e di progetto, particolari.

NR. TAVOLA

IL PROGETTISTA

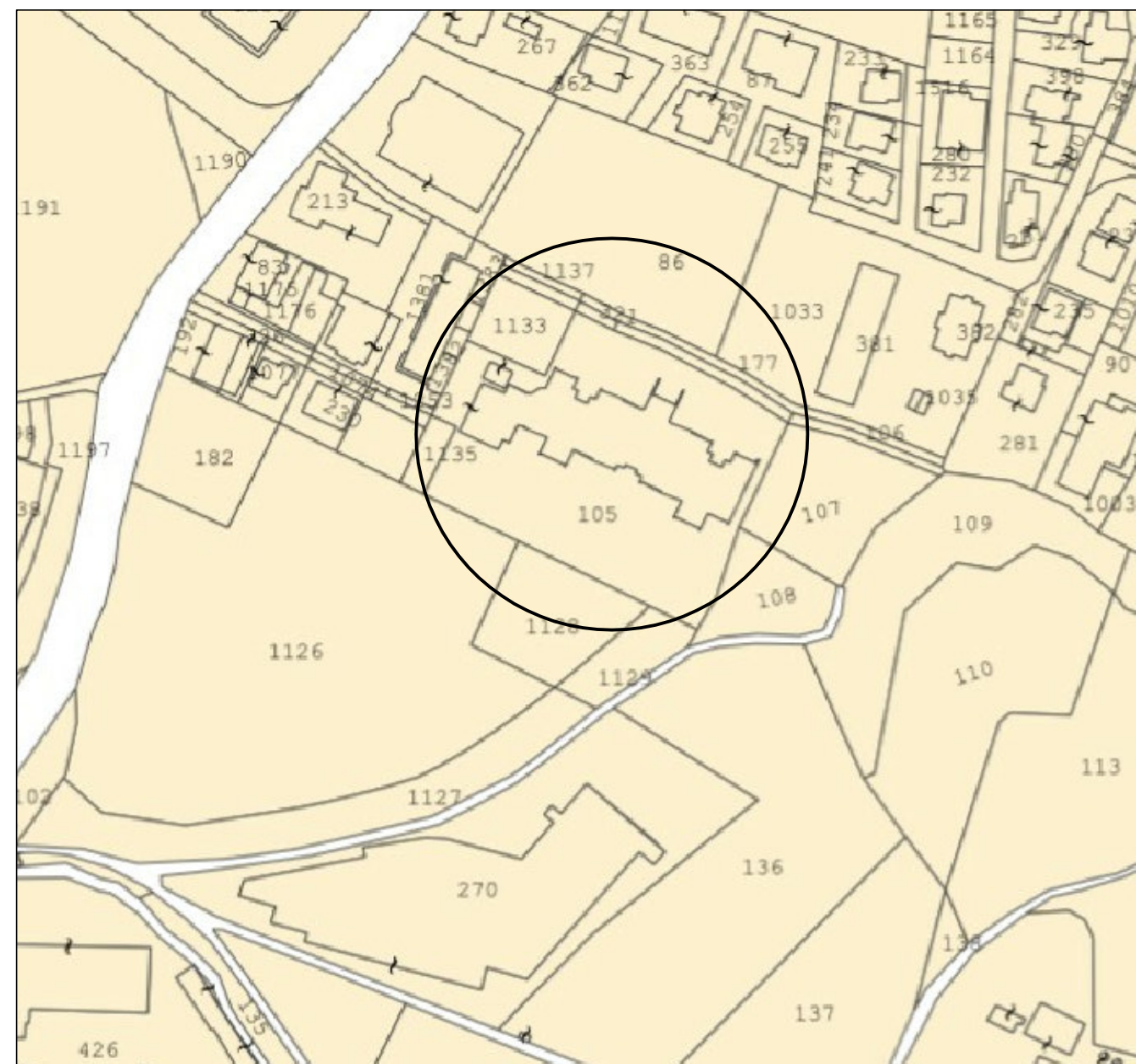
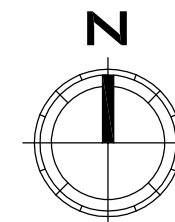
IL DIRETTORE DEI LAVORI

1

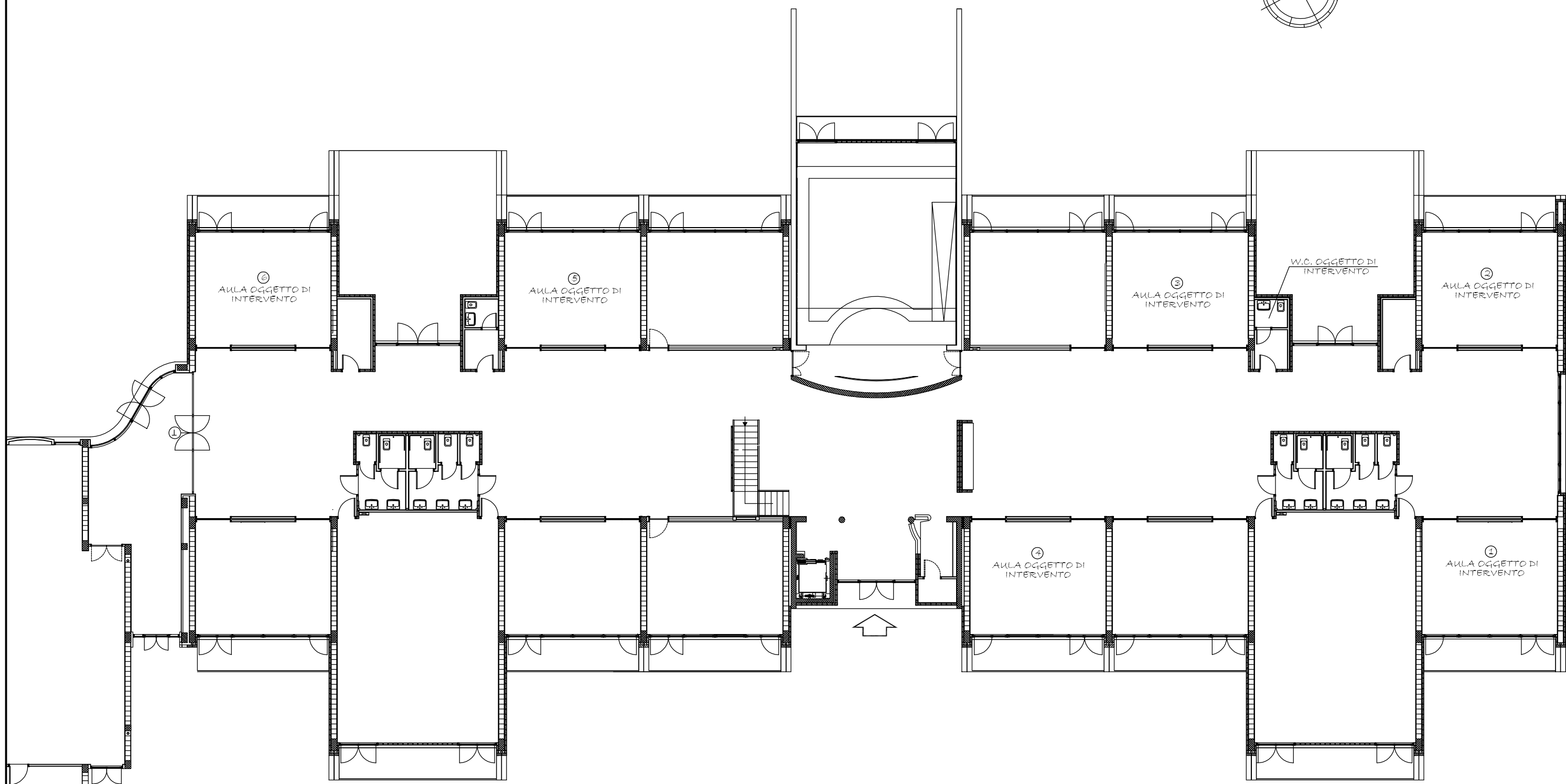
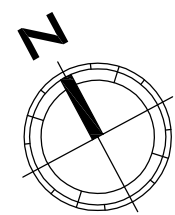
Scala: varie

Data: luglio 2020

Planimetria Catastale scala 1:2000
Comune di Deruta
Fg. 12 Part. 105

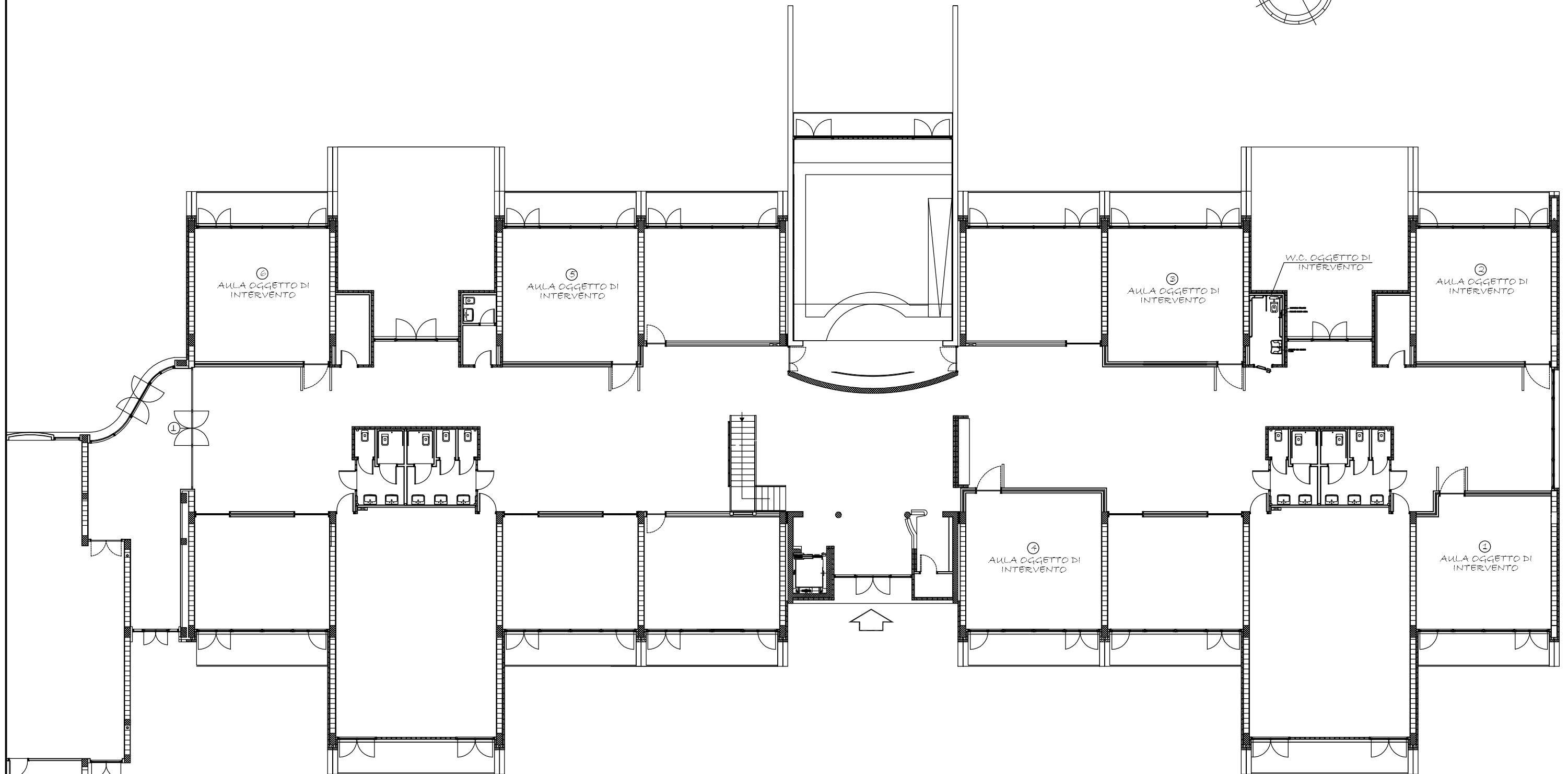
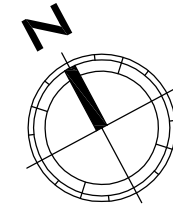


- STATO ATTUALE -

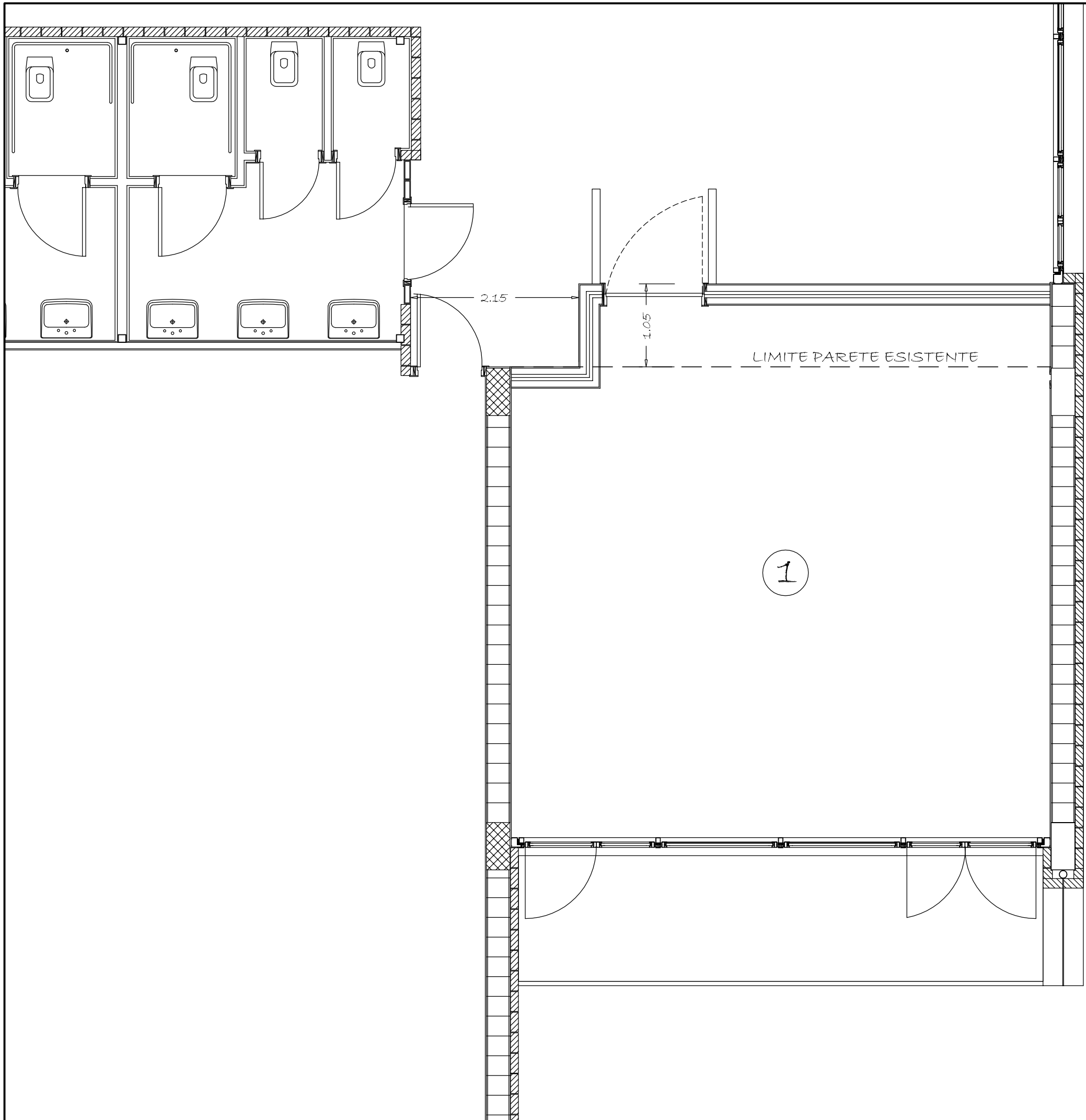


PIANTA PIANO TERRA
scala 1:200

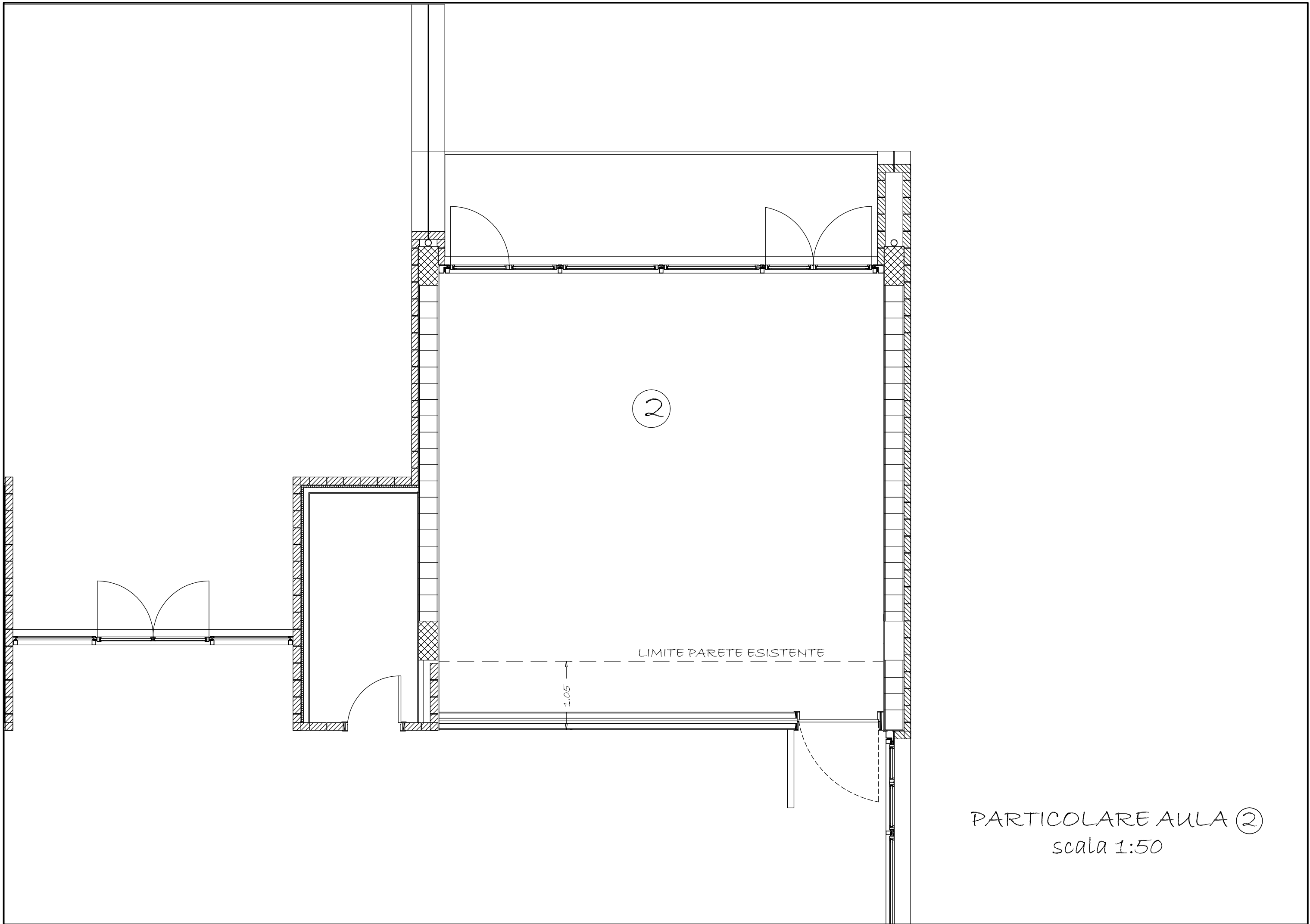
- STATO DI PROGETTO -



PIANTA PIANO TERRA
scala 1:200



PARTICOLARE AULA ①
scala 1:50

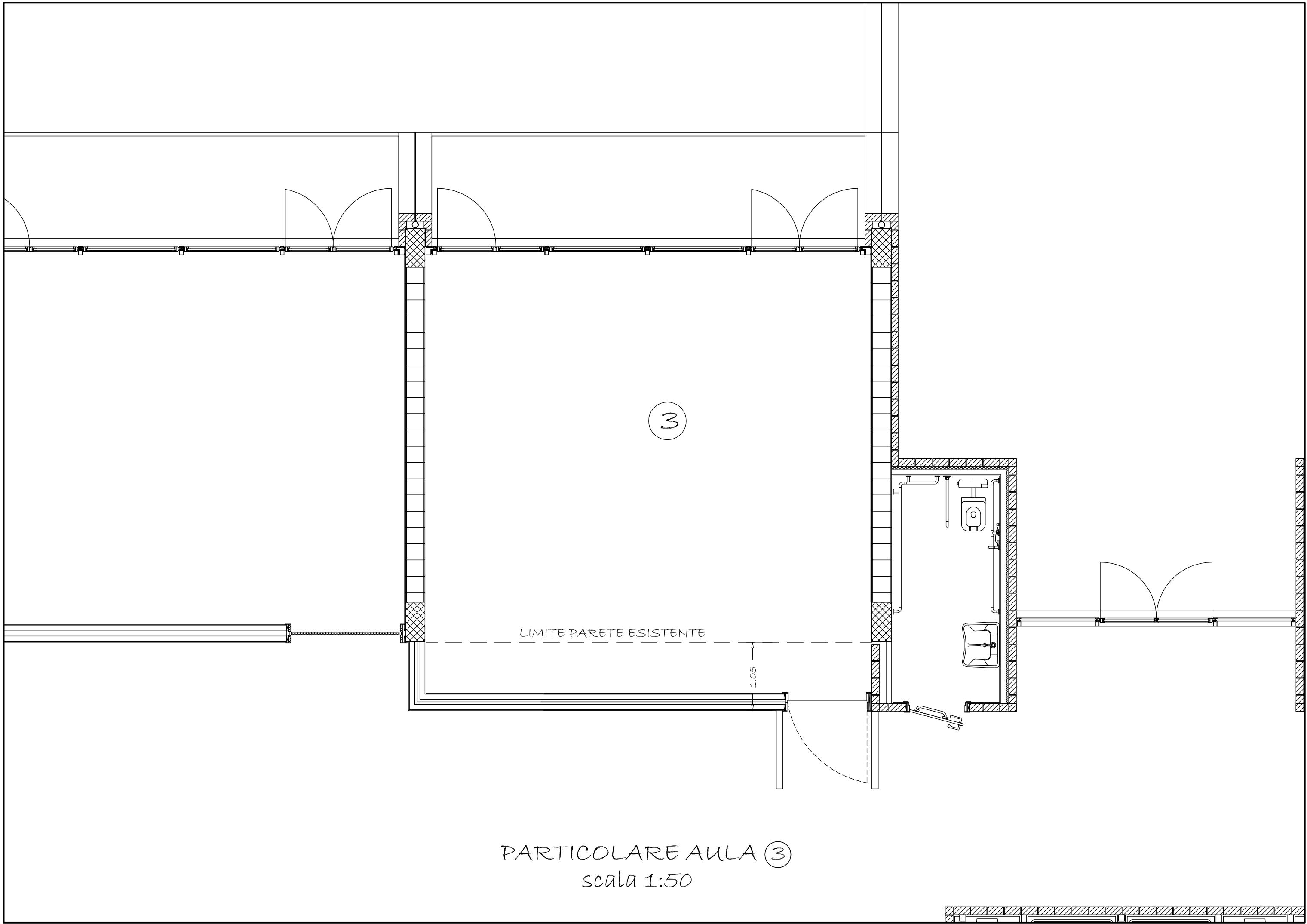


2

LIMITE PARETE ESISTENTE

1.05

PARTICOLARE AULA ②
scala 1:50

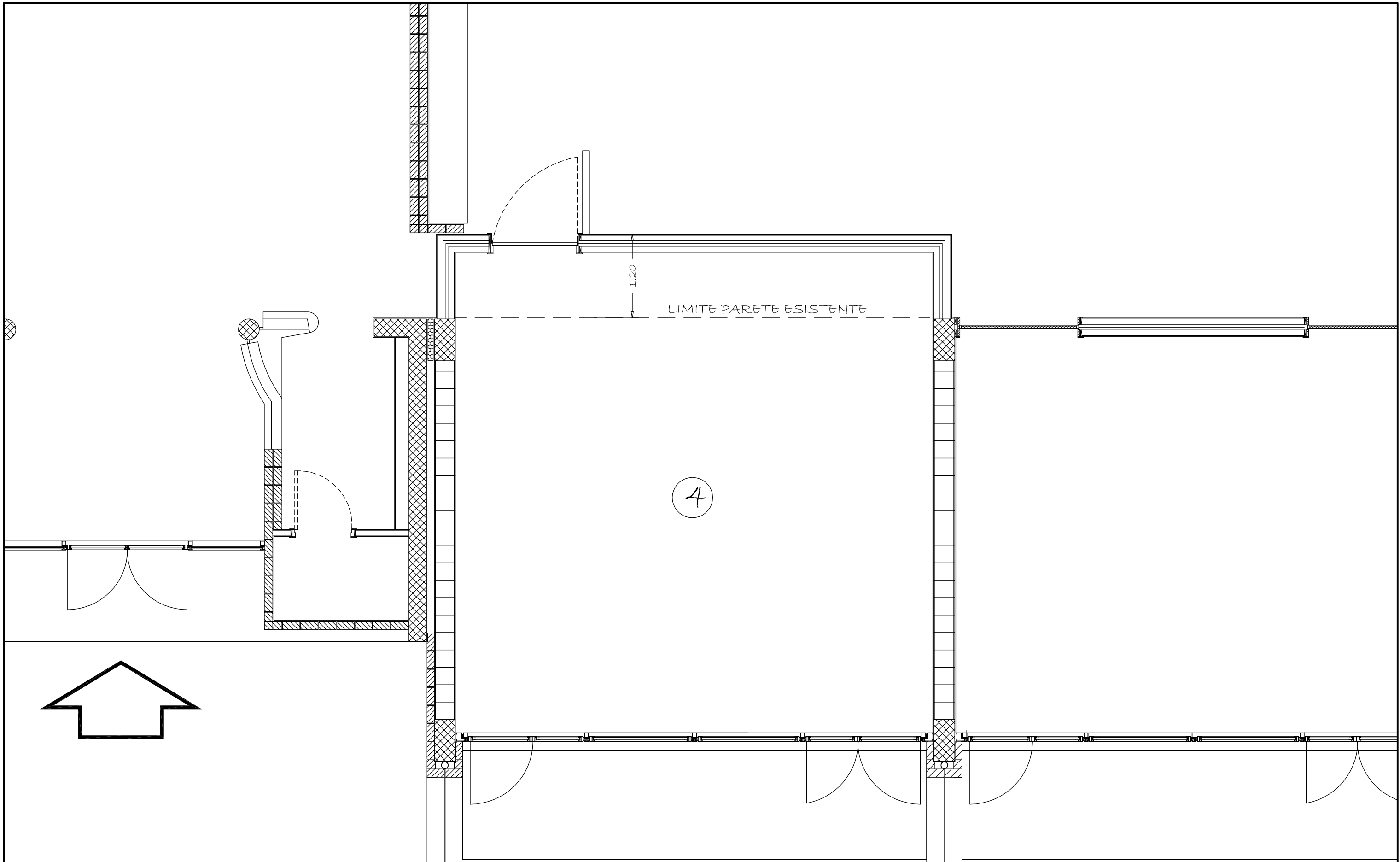


3

LIMITE PARETE ESISTENTE

1.05

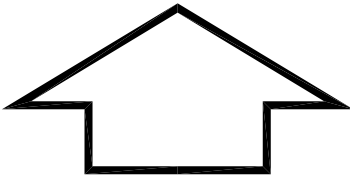
PARTICOLARE AULA ③
scala 1:50



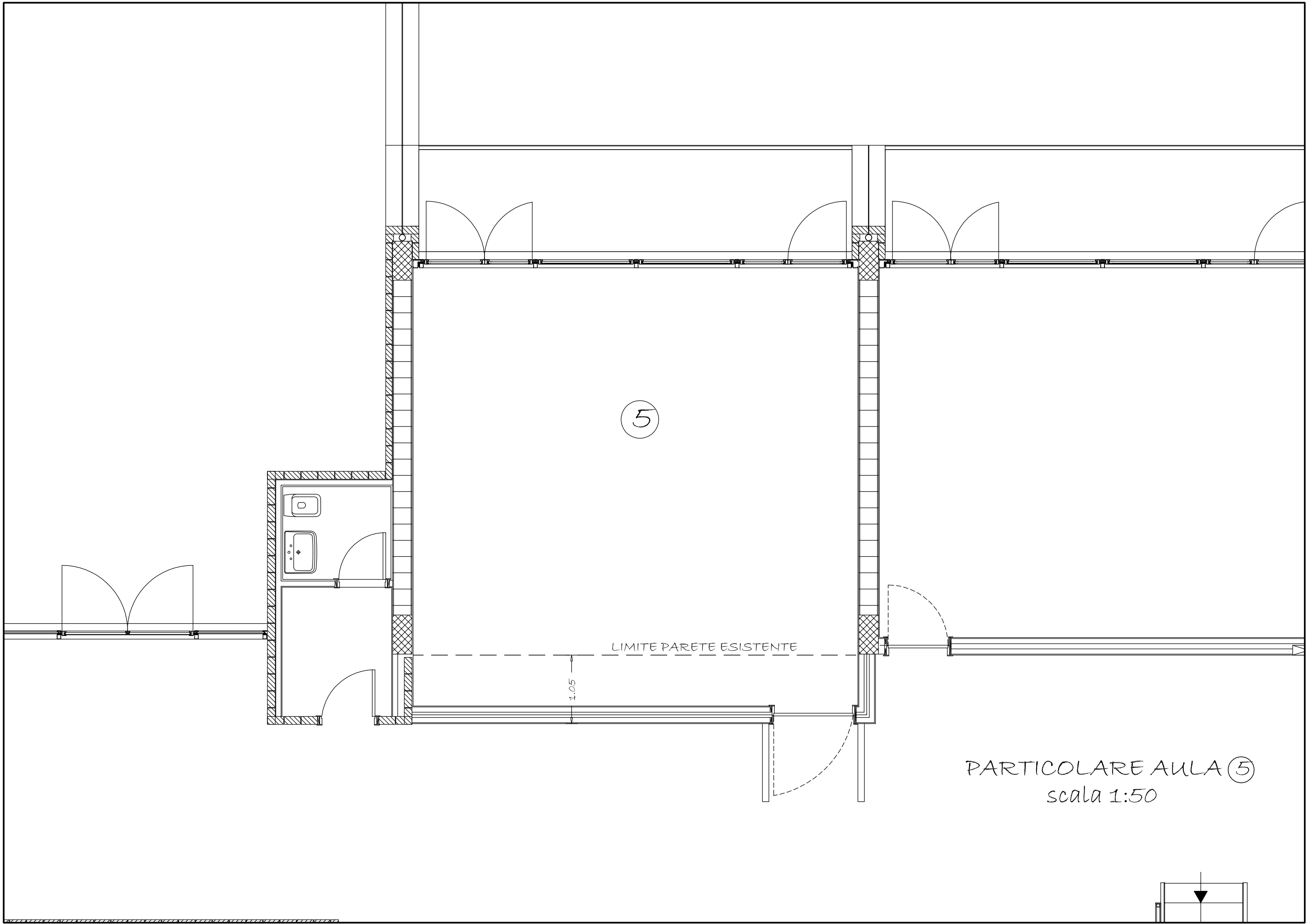
4

LIMITE PARETE ESISTENTE

1.20



PARTICOLARE AULA 4
scala 1:50

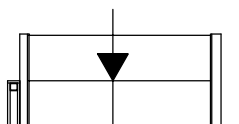


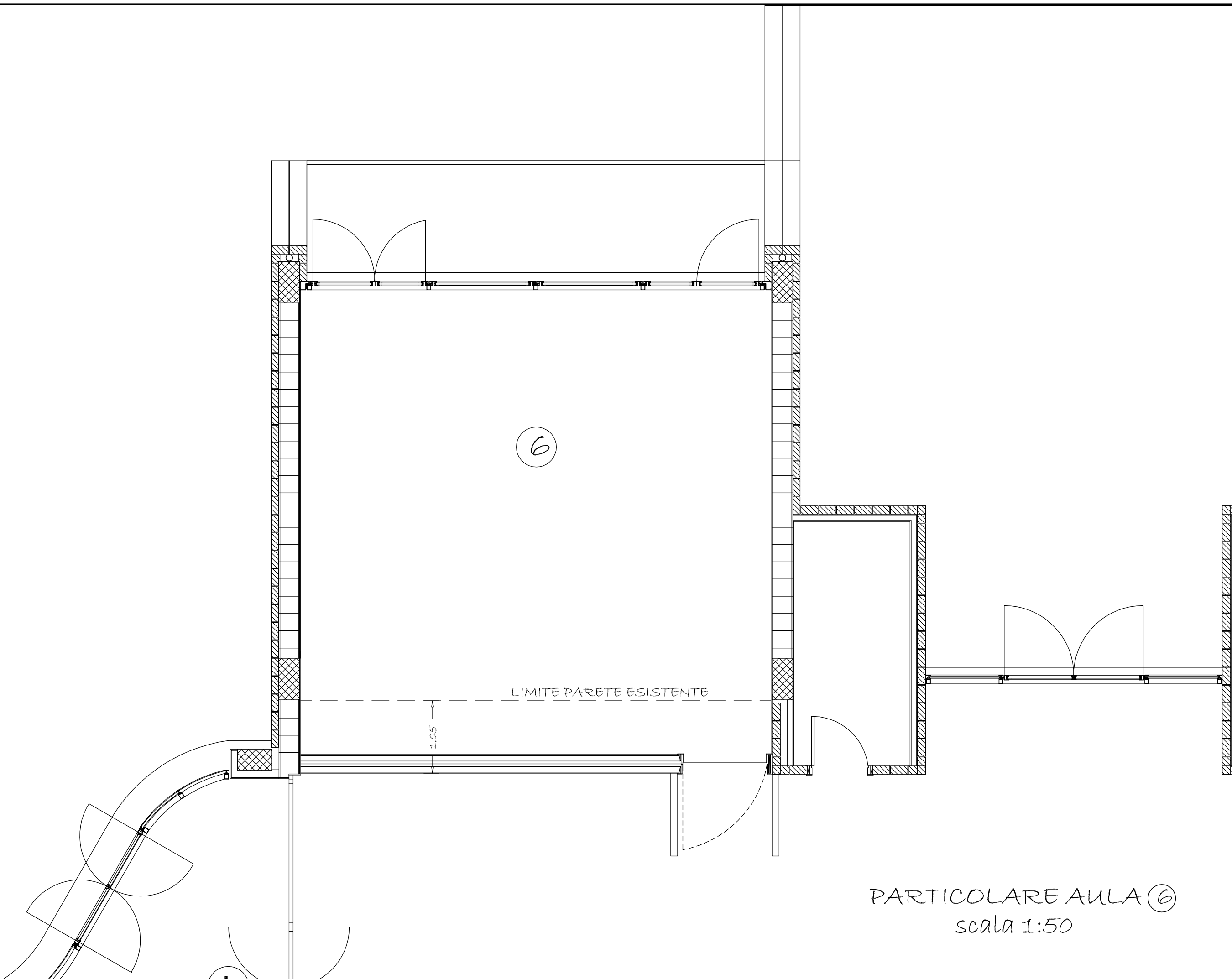
5

LIMITE PARETE ESISTENTE

1.05

PARTICOLARE AULA 5
scala 1:50

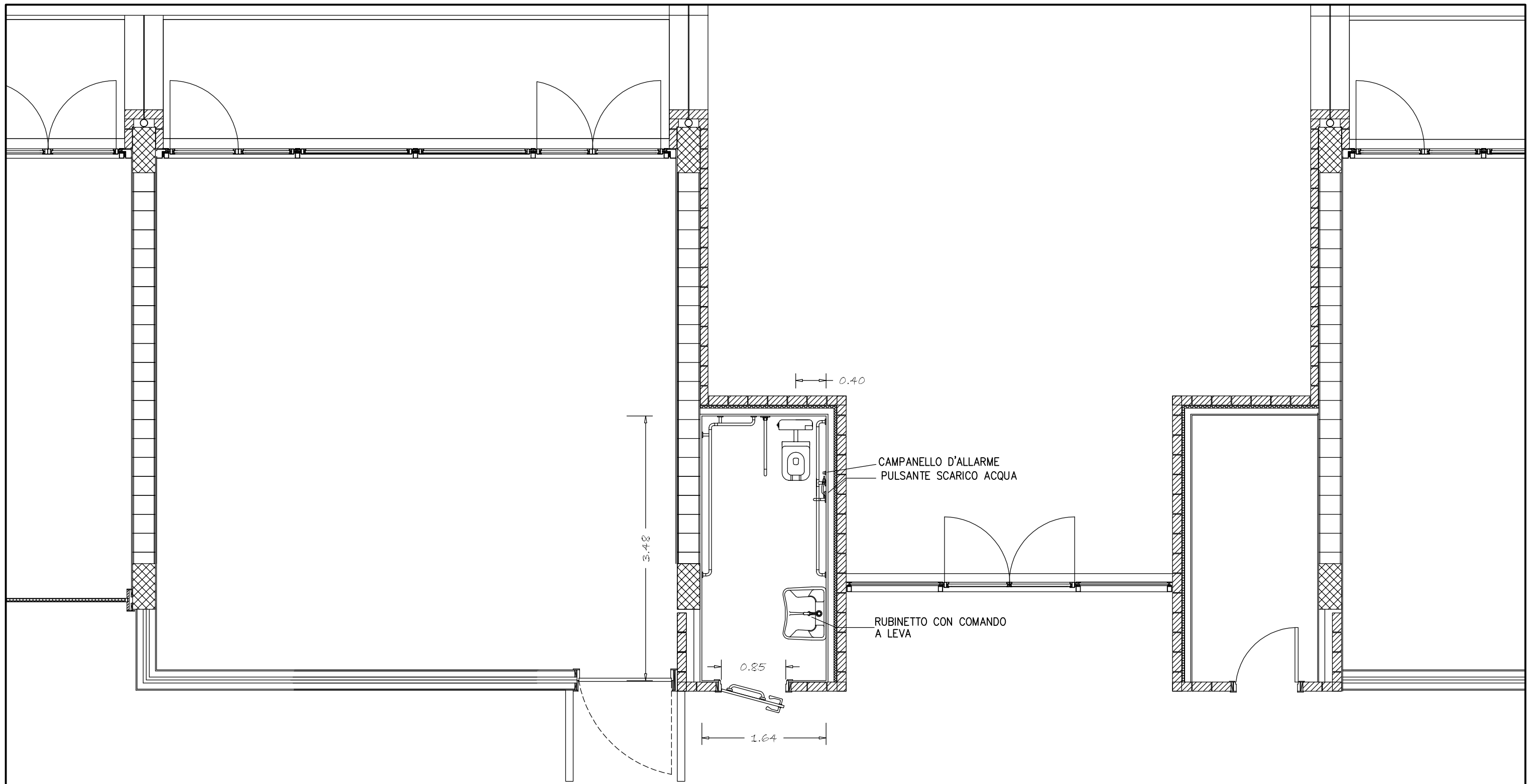




LIMITE PARETE ESISTENTE

1.05

PARTICOLARE AULA ⑥
scala 1:50



PARTICOLARE W.C.
scala 1:50

